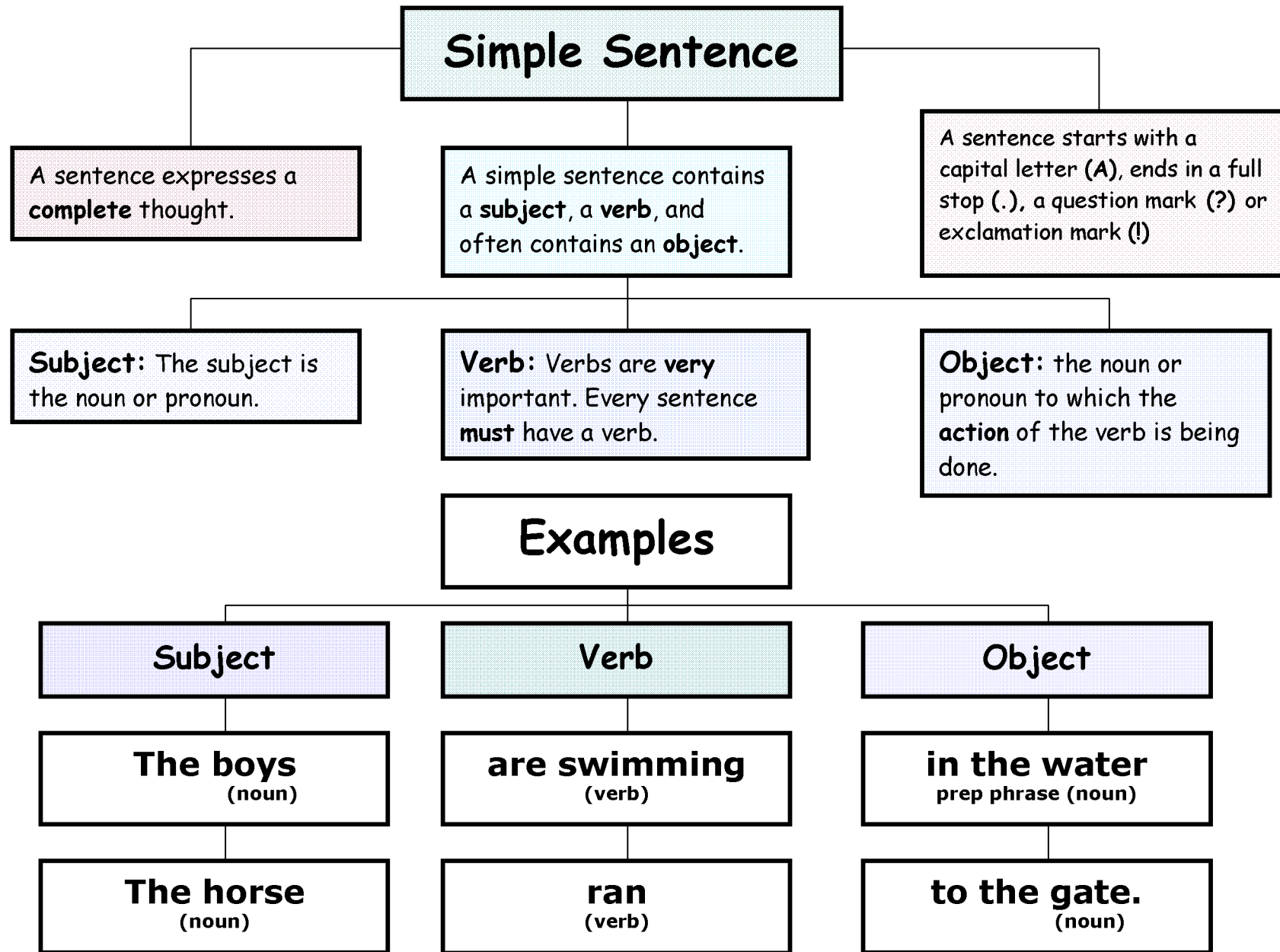
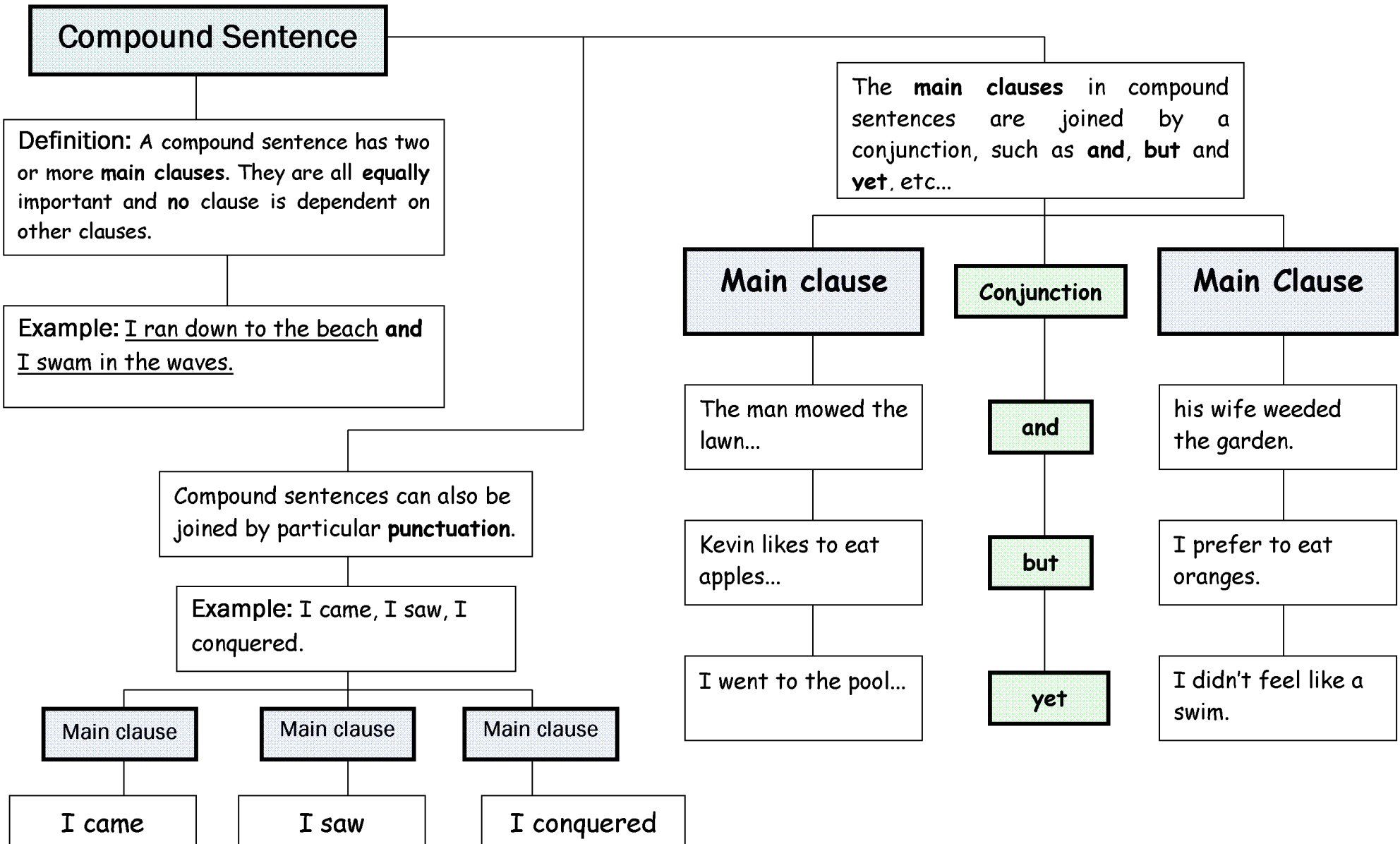


# The Sentence in Reading Comprehension – Sentence Parsing *Examples*



# The Sentence in Reading Comprehension – Sentence Parsing *Examples*



# The Sentence in Reading Comprehension – Sentence Parsing *Examples*

## Complex Sentence

Definition: A **complex sentence** has at least one **main clause**, and also one or more **subordinate clauses**.

**Subordinate clause**  
A subordinate clause is one which is linked to the **main clause** and is *dependent* on it. A subordinate clause **cannot** stand alone.

**Link words:** each **subordinate clause** must be joined by a *link word* to the **main clause**. Link words are often introduced by **who, which, that, when, since, after, because, as long as, until, if, unless, as, so that, though, although** etc...

## Complex Sentence – (Examples)

'When you stay, can we play the game that you bought?'

When you stay,

Subordinate clause

can we play the game

Main Clause

that you bought?

Subordinate clause

'We ate the apples, which the others had picked, because we were so hungry.'

We ate the apples,

Main Clause

which the others had picked,

Subordinate clause

because we were so hungry.

Subordinate clause